

8.To the extent permitted by law, ENGWE reserves the right to interpret and explain this statement, The laws of the People's Republic of China shall apply to this statement. It causes or may cause. There is compensation, liability, loss, ENGWE does not assume liability. Riders are responsible for any unforeseen or ongoing risks encountered during the course of the ride. Thank you again for your choice and trust in ENGWE.

7. Warranty policy

Dear Customer!

Thank you for purchasing ENGWE series products! Warranty Service: Please go to the official website to check Engwe's warranty policy.

Official website: <https://engwe-bikes.com> After purchasing Engwe products, if you have any quality problems, please contact Engwe after-sales service: service@engwe-bikes.com

Please provide order number, purchase interface, motor number picture, and problem video.



Y600

PLEASE READ THIS MANUAL CAREFULLY BEFORE USING YOUR ELECTRIC SCOOTER

CATALOGUES

Thank you for choosing to join the ENGWEE-BIKES family.
We invite you to read through this user manual to learn about your electric scooter and what it is like to own one. First and foremost, remember to be safe out there. Your scooter is an accessory to your lifestyle and activities. Always follow best practices and traffic rules. Even in this ever-evolving technology, it therefore requires basic maintenance and care to always function properly. Preventive maintenance is the name of the game. We invite you to grow with us and take advantage of our modular technical design. Instructions, videos and live support are being created to provide you with all the knowledge you need to make the most of your Engwe scooter.

Contact Information
Engwe Bikes
service@engwe-bikes.com
www. engwe-bikes. com

- 1、 Safety Instructions 3
- 2、 Product description and assembly instructions 4
- 3、 Preserve 6
- 4、 Specification Parameter Table 7
- 5、 Instrumentation and Operation 8
- 6、 Trademarks and legal notices 10
- 7、 Warranty Policy 10

1. Safety Instructions

1. Electric bikes are not allowed on public transport roads, please observe local laws and policies when driving the Y10
2. Scooters are a leisure product, You will need to practice before you can master the riding skills. Engwe is not responsible for any injury or damage caused by the rider's inexperience or failure to follow the instructions in this document.
3. Before lending your scooter to someone, make sure they have read this manual, watched the instructional video and received a beginner's guide, It is your responsibility to ensure the safety of your new passenger. Please assist him/her in learning to use the product until he/she learns the basic operation of the scooter. Please ensure that each new rider wears a helmet and other protective equipment
4. Following the tips and warnings in this manual will reduce the risks, but will not eliminate all risks. Please remember that when you use a scooter you may be at risk of injury or death through loss of control, collisions and falls. Scooters are only suitable for use on the hard surfaces above. It is recommended that you use them in relatively enclosed road environments (e.g. small areas, parks, dedicated fields, etc.) and do not cross areas with obstacles and contact points. Be alert and slow down when entering unfamiliar environments.
5. To reduce the risk of injury, you must read and follow all the 'Caution' and 'Warning' notices in this manual. Do not exceed the speed limit and do not ride on motorways.
6. For your first ride, do not choose areas where children, pedestrians, pets, vehicles, bicycles, etc. may be an obstacle and a potential hazard.
7. Please respect the rights of pedestrians when riding. Avoid frightening pedestrians, especially the elderly, children, the disabled and pregnant women. Alert pedestrians when approaching them from the rear and slow down when overtaking them. Please obey local traffic laws.
8. When riding in countries and regions where there are no laws or regulations relating to electric scooters, the safety requirements for riders in this manual must be strictly adhered to. Engwe shall not be liable for any property damage, personal injury, accident or legal dispute arising from the user's violation of the safety tips in this manual.
9. Before riding the scooter, check and ensure that there are no loose fasteners or damaged parts. If the scooter makes an unusual noise or alarm, stop using it immediately and consult your point of purchase or send an email to the manufacturer.
10. When riding, please observe the road surface, avoid obstacles and have level ground (including but not limited to wet ground, loose sand, rocky ground, ice).
11. This product is suitable for ages 14-60 and weighs up to 120kg.
12. Do not attempt to charge your electric vehicle when the charging port, charger or power outlet is wet.
13. Ensure that the scooter is charged with the original Engwe charger.
14. Use only Engwe approved parts and accessories. And do not modify your scooter.
15. Children should not use scooters or play with scooter parts. When riding, the body vibration of the scooter can cause the driver's body to vibrate.
16. It is recommended to park on a flat, firm surface. If parking on a slope, the stand must face downhill to prevent tipping over. Do not allow the scooter to rush down to prevent the kickstand support from closing under gravity and the vehicle from tipping over. After lowering the kickstand, check that the vehicle is stable to prevent it from tipping over (slipping, wind, shaking). Do not park in busy areas. It is recommended to park against a wall. Please try to park the scooter on a flat road.
17. For a better driving experience, regular maintenance of the product is recommended.
18. Please read the user manual before charging.
19. Do not touch the brake parts of the scooter as this may cause injury.

Please observe the following safety tips:

- A. People who are not suitable for this mobility scooter include: people under the influence of alcohol or drugs, people who are unable to perform strenuous exercise due to illness, people who are unable to maintain their balance. People whose weight exceeds the prescribed limit (see "Specifications" in the instructions for use), and pregnant women.
- B. Minors need to be supervised by adults on scooters.
- C. Please observe local laws and regulations when riding. Please do not ride your scooter in areas where it is prohibited by local law.
- D. In order to ride safely, you must ensure that you can see the area in front of you and that you can be seen by others.
- E. Do not ride in snow, rain, slippery, muddy or icy weather for any reason. Do not ride your scooter over obstacles (sand, rocks or barricades) as this may result in a loss of balance or grip, which could lead to a fall.
- F. Damage and losses caused by water ingress are not covered by the warranty.
- G. Please do not drive at night.
- H. Please do not accelerate or decelerate suddenly. Please do not exceed the speed limit; otherwise, there may be a risk of loss of control, collision and fall.

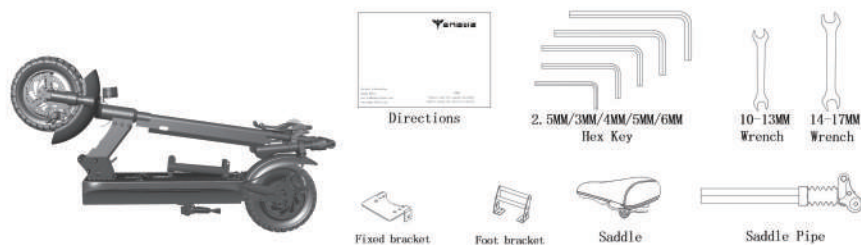
2. Product description and assembly instructions

1. Component Information



01. Gauge
02. Handlebar cover
03. Brake handle
04. Power lock
05. Folding twist
06. 3-in-1 switch
07. Handlebar
08. Handlebar clamp
09. Folding Riser
10. Riser Clamp
11. Headlight
12. Front Mudguard
13. Folding button
14. Folding Pin
15. Seatpost Clamp
16. Folding Seatpost
17. Seat Cushion
18. Seat Tube
19. Rear mudguard
20. Rear Motor Integrated Wheel
21. Front Wheel

2. Packing List



Please check carefully that the contents of the box are complete and in good condition. If any parts are missing or damaged, please contact your point of purchase or send an email to the manufacturer. Please keep the box and packing materials for at least 15 days in case you need to ship the scooter later.

3. Complete vehicle assembly instructions

2.3.1 Take out the whole car and press the folding button down with your foot then open the folding riser and fix it, reset the folding pull pin to complete the car open state;



2.3.2 Open the folding handlebar and lock the handlebar folding knob to lock it in place;



2.3.3 Adjust the brake handle to the right position, use a 5MM spanner to lock the screws to fix it.



2.3.4 Adjust the meter to the right position and use a 3MM spanner to lock the screws to fix it



2.3.5 Adjust the power lock to a suitable position, use a 2.5MM spanner to lock the screws to fix it tightly



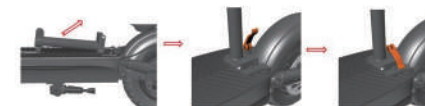
2.3.6 Adjust the 3-in-1 switch to a suitable position, use a 2.5MM spanner to lock the screws to fix it.



2.3.7 After adjusting the handlebar to the right height, tighten the handlebar clamp and then fasten the handle to complete the handlebar adjustment.



2.3.8 Open the folded seat tube, lock the handle and press the handle to fix it, complete the opening of the folded seat tube.



2.3.9 Take out the saddle and the saddle tube, adjust to the suitable position, use 14MM open-end spanner to lock both sides of the clamping code nut, complete the assembly of the saddle and the saddle tube.



2.3.10 Insert the assembled seat cushion into the folded seat tube to adjust to the appropriate position, and lock the seat tube clamp, and then handle fastening, complete the seat cushion installation.



2.3.11 First open the power lock display voltage, and then press the instrument switch to open the power meter display normal, complete the installation of the whole car.



2.3.12 Use 6MM and 13MM open-end spanner to loosen the seat tube fixing screws and the screws on both sides of the shock absorber, take away the seat tube and the bracket, fix the rear footrest and its bracket accordingly to the holes of the frame plate, and then lock the screws that have just been taken down accordingly to complete the installation of the rear foot-



4. Charging step

2.4.1 Open the charging port rubber plug and insert the charging plug, the charger indicator light is red, indicating that the charging is normal, the indicator light is green, indicating that the electricity has been fully charged.



2.4.2 Disconnect the charger and fasten the rubber plug when charging is complete.



Warning

Please use the original charger for charging, otherwise there is a risk of battery damage or fire. Please do not connect the charger when the charging port or charging cable is wet.

If the battery is broken or water, do not charge or continue to use the battery. Turn on the power switch when all 5 power bars on the dashboard are always on, the scooter charging is complete.

5. Folding and Handling

2.5.1 Turn off the scooter, release the handlebar folding twist and pull it towards the two outer sides, then fold it downwards, the handlebar folding is completed.



2.5.2 Seat cushion handle upward snap to flip the seat cushion, release the folding clamp code 90 degrees rotation, and then release the folding seat tube handle will be folded downward to complete the seat tube folding.



2.5.3 Pull the folding pin and rotate it to other positions, then press the folding button and fold the folding riser down into place to complete the folding of the whole car.



2.5.4 Once the scooter is folded, hold the risers for handling.



3. Maintenance

1. Cleaning

Use a soft, damp cloth to wipe the main unit. To remove hard dirt, scrub with a toothbrush and toothpaste, then clean with a soft, damp cloth.

2. Warning Do not use alcohol, gasoline, kerosene or other corrosive, volatile solvents to clean your scooter. These substances may damage the exterior and interior structure of the scooter body. It is forbidden to spray water on the scooter with a pressure water gun or hose. Before cleaning, make sure the scooter is powered off, the charging cable is unplugged, and the rubber cover of the charging port is closed. Otherwise, the electronic components or battery may be damaged.

3. Storage When the scooter is not in use, place it in a bright, dry place. Do not park the scooter outdoors, Sunlight exposure or extreme temperature conditions (too hot and too cold) will accelerate the deterioration of the plastic parts and may result in shorter battery life.

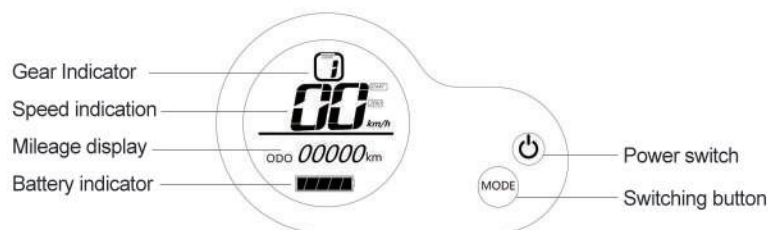
4. Battery removal and maintenance Do not use third-party batteries without permission, as this is a safety hazard. Do not store or charge the battery at temperatures beyond the specified limits (see specifications).

4. Specification table

Performance index	Project	Y600
Basic Parameters	Packing box size	1220*240*480MM
	wheel Size	10Inches
	Body Material	Al
	Maximum Load	264lbs(120KG)
	Vehicle weight	58.4lbs(26.5KG)
Main Parameters of the	Maximum Speed	28mph(45km/h)
Whole vehicle	Maximum Gradient	15°
	Mileage Range	43.5miles(70km)
	Working Temperature	-48-138°F(-5-45°C)
Battery Parameters	Rated Voltage	48V
	Battery Capacity	18.2AH
	Service Life	500 Times
Motor Parameters	Motor Power	600W
	Motor Type	Brushless Gear Motor
	Maximum Torque	28Nm
Charger Parameters	Input voltage	100-240V
	output voltage	54.6v
	output Current	2A

5. Instrumentation & Operation

5.1 Interface Description



5.2 Operating Instructions

5.2.1 Open the power lock and long press the power button for 2 seconds, the instrument light will be on to switch on, long press the power button for 2 seconds to switch off the instrument in the on state.

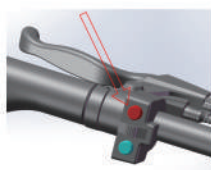
5.2.2 By short pressing the button once, you can switch between 1-2-3 speeds for different speed experiences.

WARNING: Start in 1st gear, not 2nd or 3rd!



5.2.3 Press the red headlight button and the front and rear headlights come on, press it again and the button will pop up and the front and rear lights go off.

5.2.4 The centre black key opens to the left and the left turn signal turns on, opens to the right and the right turn signal turns on, the key is centred and the left and right turn signals go out.



5.2.5 Press the green horn button, the horn sounds, release the button, the horn does not sound.



5.2.6 Instrument power display, 5 cells for the full state of charge, when the power is 1 cell vehicle should be charged in time



5.3 Speed Limit and Release Instructions

5.3.1 Start by pinching the kill handle, open the electric door lock, open the gauge then throttle pinch 3 times to complete the speed limit.

5.3.2 Same operation as the speed limit, first pinch the kill handle, open the electric door lock, open the gauge then throttle pinch 3 times to finish lifting the speed limit.

6. Trademarks and legal notices

ENGWE is a registered trademark of ENGWE Technologies Co., Ltd; ENGWE is a registered trademark of ENGWE Technologies Co, Ltd; An-droid is a trademark of Google; App Store is a logo of Apple Services; other trademarks mentioned herein are the property of their respective owners. When printing this manual, as many feature descriptions and explanations as possible were included. However, due to continuous improvement of product features and design changes, it may still not correspond to the product you purchased. Due to product up-dates, the actual product may differ from the color and appearance mentioned in this manual. Please refer to the actual product. ENGWE Technologies Co., Ltd. All rights reserved. Manufacturer: ENGWE Technology Co.

We recommend that you:

1. Please read this user manual carefully before riding.
2. Do not allow others to ride this scooter if they have not read this manual correctly.
3. Please read this manual carefully. All parts of the scooter must be installed correctly according to the instructions. Also, make sure that the installation is not too loose or too tight to avoid damage or failure.
4. In order to minimize the risk, please purchase insurance in time after the purchase of the product.
5. Before riding, check the state of the installation, wheel performance and battery condition according to the instructions in the manual to ensure that the scooter is in proper condition and that there are no signs of looseness or damage to any parts. If there are any abnormal signs, please stop riding immediately and contact after-sales for inspection and guidance.
6. You are obligated to be aware of all relevant laws, regulations and policies regarding scooter riding in your area and to strictly comply with the applicable laws, regulations and policies.
7. The data and parameters of the scooter vary from model to model. It is subject to change at any time without notice.